

The Board of County Supervisors of Albemarle County, Virginia, in regular meeting on the 18th day of June, 2025, adopted the following resolution:

RESOLUTION

WHEREAS, the street(s) in **Old Trail Block 32**, as described on the attached Additions Form AM-4.3 dated **June 18th, 2025**, fully incorporated herein by reference, is shown on plats recorded in the Clerk's Office of the Circuit Court of Albemarle County, Virginia; and

WHEREAS, the Resident Engineer for the Virginia Department of Transportation has advised the Board that the street(s) meet the requirements established by the Subdivision Street Requirements of the Virginia Department of Transportation.

NOW, THEREFORE, BE IT RESOLVED, that the Albemarle Board of County Supervisors requests the Virginia Department of Transportation to add the street(s) in **Old Trail Block 32**, as described on the attached Additions Form AM-4.3 dated **June 18th, 2025**, to the secondary system of state highways, pursuant to §33.2-705, Code of Virginia, and the Department's Subdivision Street Requirements; and

BE IT FURTHER RESOLVED that the Board guarantees a clear and unrestricted right- of-way, as described, exclusive of any necessary easements for cuts, fills and drainage as described on the recorded plats; and

FURTHER RESOLVED that a certified copy of this resolution be forwarded to the Resident Engineer for the Virginia Department of Transportation.

* * * * *

Recorded vote:

Moved by:

Seconded by:

Yeas:

Nays:

Absent:

A Copy Teste:

Claudette K. Borgersen, Clerk
Board of County Supervisors



COMMONWEALTH OF VIRGINIA DEPARTMENT OF TRANSPORTATION
Form AM 4.3

In Albemarle County

by Resolution of the governing body adopted 6/18/2025

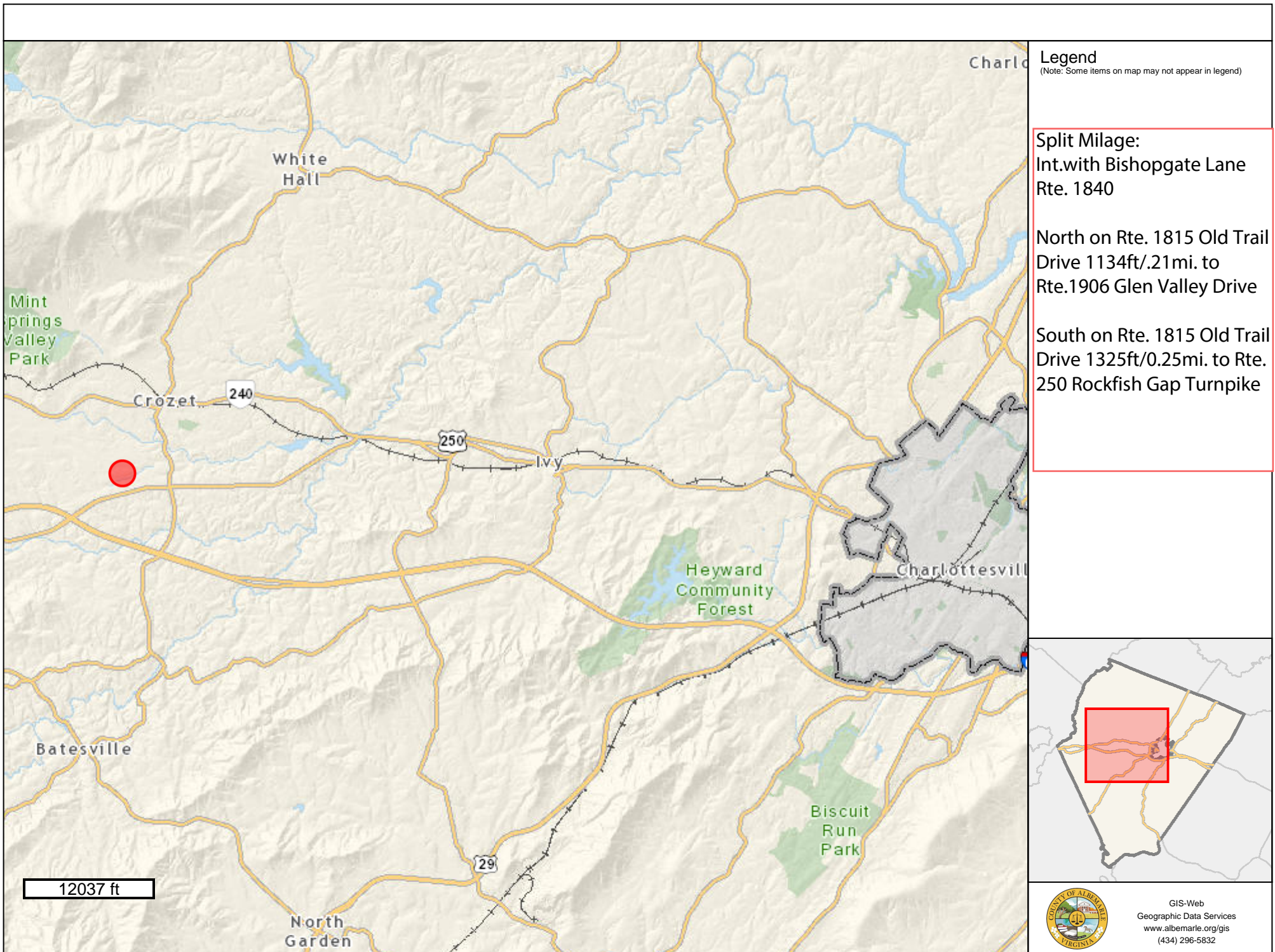
The following VDOT Form AM-4.3 is hereby attached and incorporated as part of the governing body's resolution for changes to the secondary system of state highways.

A Copy Testee Signed (County Official): _____

Report of Changes in the Secondary System of State Highways

Project/Subdivision: **Old Trail Block 32**

CHANGE TYPE	RTE NUM & STREET NAME	CHANGE DESCRIPTION	FROM TERMINI	TO TERMINI	LENGTH	NUMBER OF LANES	RECORDATION REFERENCE	ROW WIDTH
Addition	Rt. 1840 - Bishopgate Lane	New subdivision street §33.2-705	Int of Rte. 1815 Old Trail Drive	South 2966ft to intersection of Bishopgate Lane at (Approx Sta. 13+32) 332' from Old Trail Drive	0.56	2	5208/362, 5386/251	51.00
Addition	Rt. 1841 - Charmwood Street	New subdivision street §33.2-705	Int with Bishopgate Lane Rt. 1840	East 401ft to intersection with Bishopgate Lane Rte. 1840	0.08	2	5208/362, 5386/251	49.00
Addition	Rt. 1842 - Raynor Place	New subdivision street §33.2-705	Int with Bishopgate Lane Rt. 1840	East 320ft to intersection with Bishopgate Lane Rte. 1840	0.06	2	5208/362, 5386/251	49.00



Legend
 (Note: Some items on map may not appear in legend)

Split Milage:
 Int.with Bishopgate Lane
 Rte. 1840

North on Rte. 1815 Old Trail
 Drive 1134ft/.21mi. to
 Rte.1906 Glen Valley Drive

South on Rte. 1815 Old Trail
 Drive 1325ft/0.25mi. to Rte.
 250 Rockfish Gap Turnpike

12037 ft

 GIS-Web
 Geographic Data Services
www.albemarle.org/gis
 (434) 296-5832

